

**WSCP
Annual
Report
2023-24**

**01 April 23 -
31 March 24**

Wakefield Safeguarding Children Partnership

Annual Report 2023-24

01 April 23 - 31 March 24



Introduction

Partnership Structure &
Governance

Progress made since 2022-
23

Independent Scrutineer
Yearly Summary

Executive

Child Safeguarding Practice
Review Group (CSPRG)

Child Death Overview Panel
(CDOP)

Multi-Agency Child
Exploitation (MACE) Group

Strategic and Delivery
Learning & Development
(L&D) Groups

Safeguarding Effectiveness
Group (SEG)

Safeguarding Advisor for
Education

Communication and
Engagement

Key Areas of Focus for
2024-25

Introduction

This report summarises, reflects on, and presents the work of the Wakefield Safeguarding Children Partnership (WSCP) between 01 April 2023 and 31 March 2024. This covers the fourth full financial year of operation by the WSCP since it replaced the previous Local Safeguarding Children Board (LSCB) in September 2019. Furthermore, with the publishing of Working Together to Safeguard Children 2023, this will be the final full reporting period of the partnership's arrangements as known across the previous four years. By December 2024, WSCP will have reviewed its existing arrangements and implemented a new Multi-Agency Arrangements Document (MASA). All details about the work the partnership produces is available on the WSCP website at www.wakefieldscp.org.uk.

The partnership is led by an Executive and supported by an Independent Scrutineer. The Executive is led by three statutory partners Wakefield District Metropolitan Council, NHS West Yorkshire Integrated Care Board and West Yorkshire Police, each represented by a Delegated Safeguarding Partner. It is also contributed to by a small number of representatives: lead officers from key services in all three statutory partners, headteachers from primary, secondary, and special educational needs schools, the voluntary sector, and Public Health. WSCP is funded by the three statutory partners.

This report focuses largely on the impact the partnership has achieved, analysing the work undertaken by the partnership's Executive and five sub-groups, highlighting areas of strength and areas the partnership needs to focus on developing within the next year.



Vicky Schofield

Corporate Director
Children and Young People's Services
Wakefield Metropolitan District Council



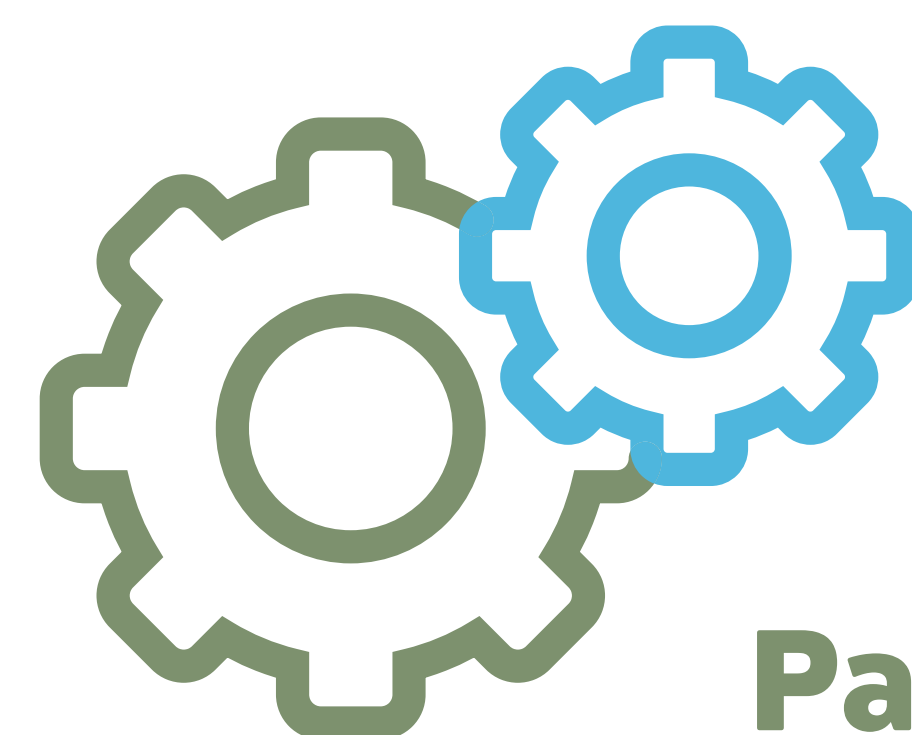
Richard Close

Chief Superintendent
Wakefield District Commander
West Yorkshire Police



Penny Woodhead

Director of Nursing and Quality
Wakefield District Health & Care Partnership
West Yorkshire Integrated Care Board



Partnership Structure and Governance

The partnership has an established structure which comprises of an Executive and five sub-groups. The sub-groups are the Child Safeguarding Practice Review Group (CSPRG), Child Death Overview Panel (CDOP), Multi-Agency Child Exploitation (MACE) Group, Learning and Development (L&D) Groups (split into a Strategic and Delivery Group), and the Safeguarding Effectiveness Group (SEG). The function of the Executive is to provide strategic oversight, scrutiny, and assurance of the work the partnership undertakes to ensure multi-agency safeguarding arrangements in Wakefield are effective. Each sub-group has specific responsibilities and identifies, discusses, develops, and delivers a range of multi-agency safeguarding information, resources, assurance, and learning opportunities which are as described within Figure 1 – Structure of WSCP.

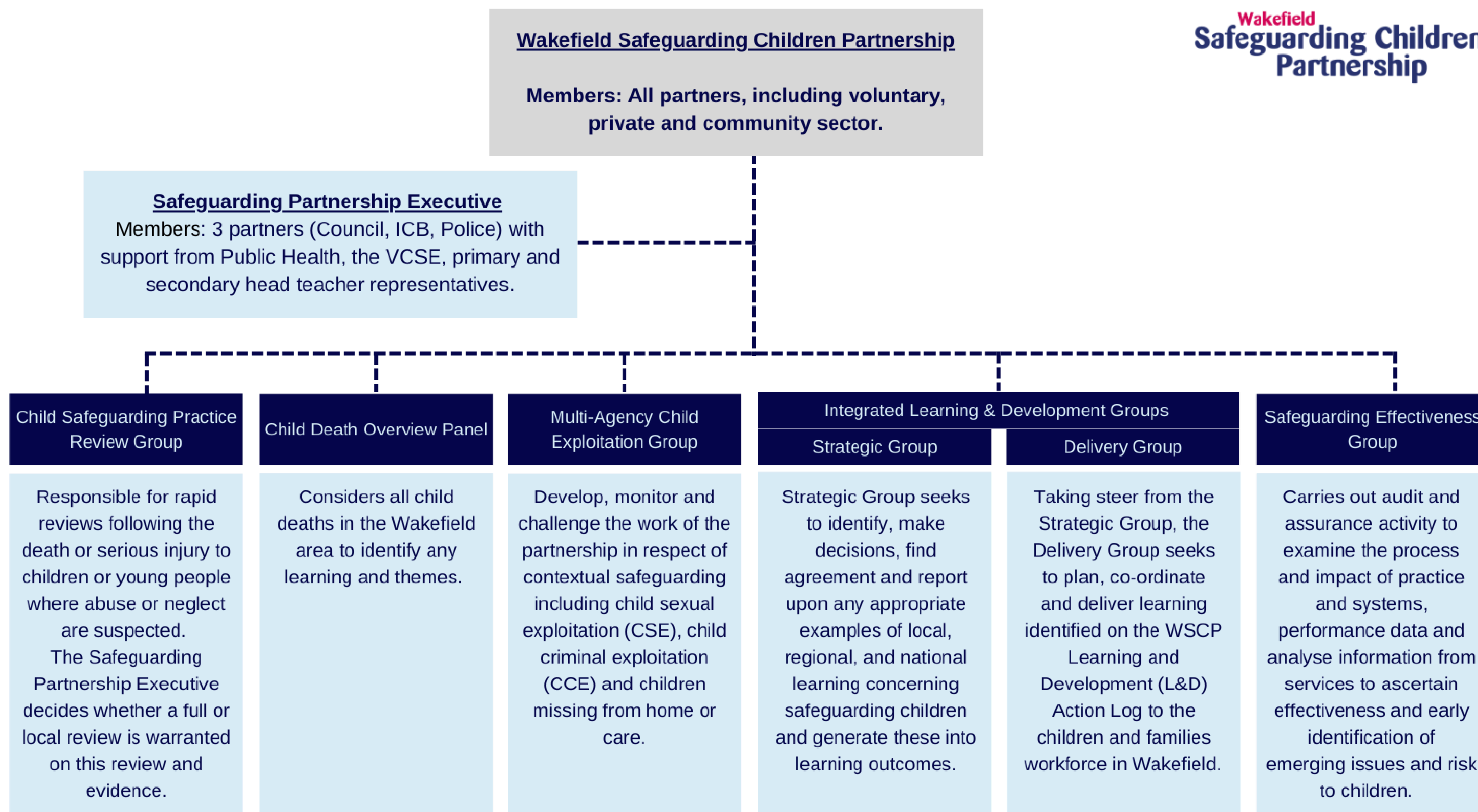


Figure 1 – Structure of WSCP

Introduction

Partnership Structure & Governance

Progress made since 2022-23

Independent Scrutineer Yearly Summary

Executive

Child Safeguarding Practice Review Group (CSPRG)

Child Death Overview Panel (CDOP)

Multi-Agency Child Exploitation (MACE) Group

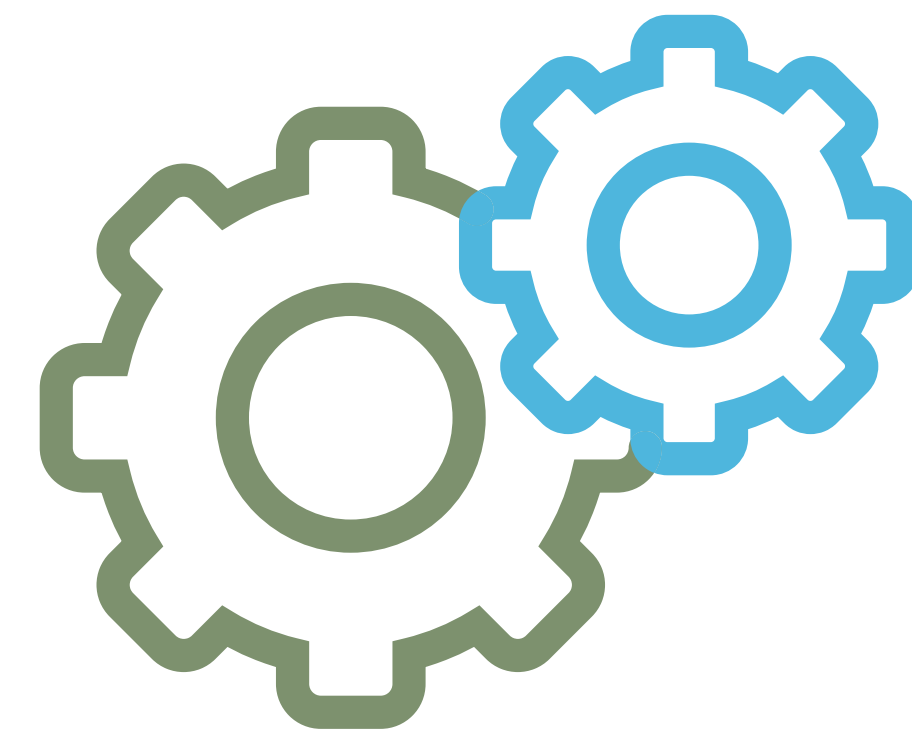
Strategic and Delivery Learning & Development (L&D) Groups

Safeguarding Effectiveness Group (SEG)

Safeguarding Advisor for Education

Communication and Engagement

Key Areas of Focus for 2024-25



Introduction

Partnership Structure & Governance

Progress made since 2022-
23

Independent Scrutineer
Yearly Summary

Executive

Child Safeguarding Practice
Review Group (CSPRG)

Child Death Overview Panel
(CDOP)

Multi-Agency Child
Exploitation (MACE) Group

Strategic and Delivery
Learning & Development
(L&D) Groups

Safeguarding Effectiveness
Group (SEG)

Safeguarding Advisor for
Education

Communication and
Engagement

Key Areas of Focus for
2024-25

WSCP is aligned to the wider system in the district and continues to contribute to the strategies and priorities from other strategic partnership and boards such as:

- Wakefield District Safeguarding Adult Board
- Wakefield District Safer Together Partnership
- Health and Well-being Board
- Children and Young People's Partnership Board

WSCP's Delivery Plan, is aligned to the district wide Children and Young People's Plan, 2022-25. The delivery plan contains 13 overarching priorities which the partnership has continued to focus on this year and will do so through to March 2025, whilst accommodating any emerging areas of development. The 13 priorities are as follows:

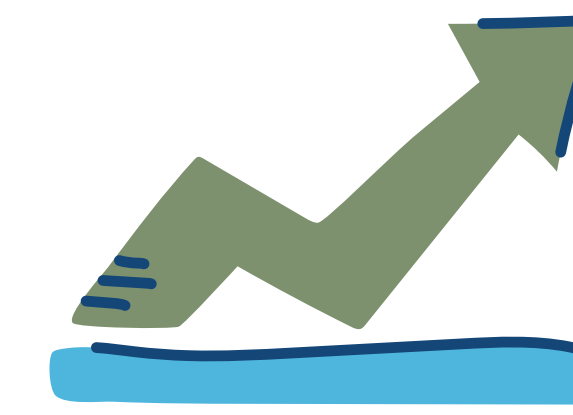
1. Ensure enhanced recognition and response to neglect across the partnership is in place
2. Babies and infants are protected from sudden death due to unsafe sleep
3. Children are protected from non-accidental injury
4. Children who are at risk from self-harm including thoughts of suicide can be identified and offered timely support. This excludes children who have self-injurious behaviours in relation to neurodevelopmental needs
5. WSCP has robust scrupulous arrangements in place
6. Services who work with children have a proactive approach in identifying, preventing, disrupting, and stopping child exploitation
7. Children experiencing and/or displaying harmful sexual behaviour are supported by services who have the knowledge and expertise to provide support
8. Children have a lead role in shaping and contributing to a safeguarding agenda
9. Children who experience bullying feel able to report it and are supported by services
10. Safeguarding thresholds are well understood across the partnership workforce
11. High quality safeguarding learning and development offer is in place for frontline workforce across the partnership
12. Safeguarding information, resources and guidance is accessible for all services who work with children and families
13. Develop shared understanding and culture of trauma awareness across the partnership

The progress made this year against the 'Key Areas of Focus for 23-24' as laid out in [the partnership's previous Annual Report](#) is summarised on pages 5 and 6. Throughout the report further detail is provided on the overall work the partnership has undertaken during 2023-24.

Key Areas of Development identified in 2022-23



Progress made since 2022-23



Children are protected from non-accidental injury

- In respect of abusive head trauma, the ongoing roll out of the [ICON programme](#) has continued, which seeks to normalise infant crying. Activity throughout this year included completion of training for all 0-19 Service staff, promotion of a new e-learning package for practitioners and the campaign week in September 2023 via WSCP and individual service communications. Consistent with recent years, there have been no reported incidents of abusive head trauma of infants in the district
- Wider developments this year have included a multi-agency non-ambulant focus group which has supported services responses to suspected non-accidental injury to babies who are non-ambulant as per [the joint protocol](#). The group also published an information leaflet for parents and carers which provides guidance as to why a referral to Children's Social Care is required
- WSCP undertook a review concerning a baby who had sustained unexplained injuries. Amongst its findings, the review found the strength of the joint protocol in ensuring all investigations are undertaken to identify all injuries. For more detail on this review please see page 11

Children experiencing and/or displaying harmful sexual behaviour are supported by services who have the knowledge and expertise to provide support

- The role and remit of the Harmful Sexual Behaviour Panel has been reviewed and revised
- The referral pathways to panel have been reviewed and updated and set out within a new one minute guide and updated Terms of Reference
- WSCP delivered a district wide campaign in November 2023 aimed at improving the understanding of harmful sexual behaviour. This includes a host of resources accessible on a new [Understanding Sexual Behaviour page](#) on the WSCP website, including new one minute guides on [Understanding Sexual Behaviours](#) and on the [Harmful Sexual Behaviour Panel](#)
- The overall learning and development offer for the workforce across the partnership has been strengthened. Forensic CAMHS have played a key role in the delivery of training that has been positively evaluated
- Schools received a tailored offer of support through briefings to the Designated Safeguarding Lead (DSL) Forum from the Harmful Sexual Behaviour Panel, the rolling out of the Brook Traffic Light Tool and the continued availability of day to day advice from Link Social Workers and Family Hub duty staff

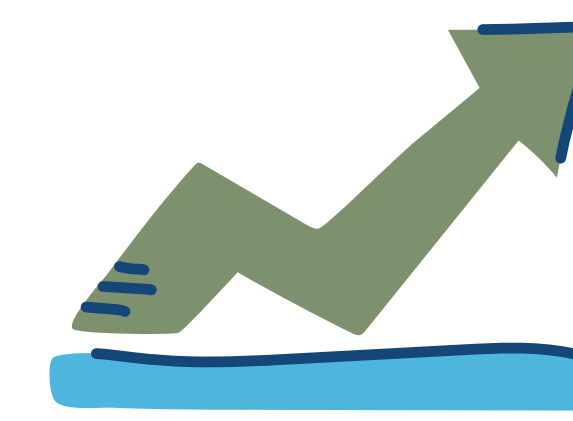
Children have a lead role in shaping and contributing to a safeguarding agenda

- The development of a partnership Instagram account, has continued to provide a platform to share safeguarding campaigns and information directly to children, this has included content on anti-bullying, mental health, county lines, gaming, relationships, water safety and where to go to get help
- The creation of [healthy and unhealthy relationships](#), [staying safe online](#) and [where can I get help](#) pages specific for children on the WSCP website has seen moderate access with over 400 collective visits, from 172 individual users, of which will not all be children
- Inclusion of the voice of the child in early help, missing from home and care and mental health multi-agency audits were undertaken this year. This inclusion of the voice of the child within audit activity has been key and provides a valuable perspective as to how support provided from services has made a difference. Where there have been limitations in systems and practice highlighted in respect of the child's voice this has led to the partnership implementing recommendations which have arisen. Such as understanding a child's lived experience and how this impacts on their take up of support and what adaptations to provision is required to enable better access
- The reporting of the work WSCP is progressing in respect of its delivery plan which is directed from the 'Our Safety' priority within the Children and Young People's District Plan to Build Our Futures has continued. Through participating in Build Our Future Summits and West Yorkshire Youth Commission Events, along with attending the Youth Voice & Participation Steering Group has helped to raise the profile of the work WSCP has been undertaking. Furthermore, having a presence at these events has enabled relationships to be formed with those children who make up those groups and has led to the work of the partnership being appraised

Key Areas of Development identified in 2022-23



Progress made since 2022-23



Services who work with children have a **proactive approach in identifying, preventing and disrupting child exploitation**

- The launch of the [Speak Up, Stand Up, Stop Exploitation section on the WSCP website](#) has been a flagship development for WSCP in supporting those who work or volunteer with children and families being able to prevent, identify, disrupt and stop child exploitation
- The online resource provides a single point of access to all of the current information, videos, resources and learning offers to tackle exploitation. Covering the broad range of types and areas associated:
 - Child Criminal Exploitation, including County Lines
 - Child Sexual Exploitation
 - Modern Slavery & Child Trafficking
 - Child Financial Exploitation
 - Online Exploitation
 - Missing From Home & Care
 - Extra-Familial Harm
- Despite only launching in March 2024, the evidence available has highlighted the resource has been well received. Analytics show the resource has been viewed over 1,050 times by 445 people, and has been shortlisted for a national Local Government Chronicle (LGC) Workforce award
- Wider developments in respect of responses to child exploitation have taken place and can be viewed under the MACE Group section from page 15

Safeguarding information, resources and guidance is accessible for all services who work with children and families

- WSCP has continued to produce a range of safeguarding information, resources and guidance aimed at making safeguarding inclusive for all, this includes:
 - Along with the Speak Up, Stand Up, Stop Exploitation resource detailed above, additional activity has included:
 - An [online Reducing Parental Conflict Toolkit section on the WSCP website](#)
 - A [new Adversity, Trauma and Resilience page](#)
 - A host of [new one minute guides](#) including Adverse Childhood Experiences, Understanding Sexual Behaviours, Harmful Sexual Behaviours Panel, Coercive and Controlling Behaviour and Child Exploitation
 - [Safeguarding campaigns](#) on online gaming and gambling, understanding sexual behaviour, child exploitation and ICON
 - 7 Point Briefing on a Rapid Review
 - [WSCP Plan on a Page](#), [public display posters on what WSCP does](#) and a [Continuum of Need poster](#)

Develop shared understanding and culture of trauma awareness across the partnership

- WSCP has continued to contribute towards a trauma informed and responsive system in West Yorkshire by 2030 as prescribed by the [West Yorkshire Integrated Care Board's Adversity, Trauma and Resilience Group](#)
- Locally, highlights include:
 - A joint partnership task and finish group oversaw a piece of work to map the current understanding of being trauma aware, sensitive, responsive and informed. The key elements of learning were the need to increase understanding of the difference between these four descriptions across the district, along with developing a single point of access where resources can be accessed from. This has been achieved by the launch of a [Adversity, Trauma and Resilience page](#) on the WSCP website. The page includes an overview of what adversity, trauma and resilience is, information on the West Yorkshire programme, resources on Adverse Childhood Experiences, what approaches can support to reduce harm and protect, the trauma continuum and links to view the Trauma Masterclass which ran in Safeguarding Week 2023. Since launching it has had over 250 visits, 130 of those by different individuals. In addition, the Trauma Masterclass recording has had 185 views, since it was delivered to over 300 people virtually in Safeguarding Week 2023
 - The Trauma Masterclass was delivered by partner services from across the district and was a session that shared practice and knowledge as to what is already being delivered in respect of adversity, trauma and resilience

Independent Scrutineer Yearly Summary

Overall, this reporting period can be considered a successful one. This can be evidenced through the data and reports received by the WSCP's Executive. Throughout the reporting period this group met regularly through a cycle of Business meetings and Scrutiny and Assurance meetings. The Executive's primary methodology at strategic level is via its oversight of a Delivery Plan. This consists of 13 priorities delivered through 44 actions. Reports include highlight reviews of these actions as well as regular deep dive reports to each of the 13 priorities, in this way throughout the year the priorities are systematically examined in detail. Progress is recorded via a series Red/Amber/Green ratings and progress has been significant through the year. In May 2023 the 44 actions were recorded as 32 Amber/9 Green. By July these were reported as 26 Amber/18 Green. At the end of the reporting period the report showed 13 Amber/31 Green.

In addition, the Executive also receives on a regular basis a Vital Signs report which comprises a core data set to support and evidence the highlight and deep dive reports.

During the year, Executive enquiry has pressed for some changes and further detail to the data in order to better aid its understanding of concerns and evidence of progress. These requests have been responded to with data variations and deeper analysis of some areas of concern. For example, data relating to the contact and referral rates, waiting times for mental health services and child exploitation data have been subject to deeper analysis and new enquiries as the Executive seeks improved evidence of impact and effectiveness. As part of this process for example, the Police were asked to provide evidence of their use of legal powers to disrupt and prevent exploitation of children. In response they were able to present data covering the previous six months showing ten different legal orders used on 346 occasions. The Vital Signs report is referred on each occasion to the Safeguarding Effectiveness Group Sub-Group for follow up actions and monitoring.

The Executive was supported throughout the year by its sub-groups which met regularly and were well attended by a comprehensive cross range of partners. I have attended or observed almost 100% of the meetings of sub-groups and chair the Safeguarding Effectiveness Group. In a similar way to the Executive, the sub-groups are demonstrably not dominated by any single partner, chairing arrangements, reporting and peer challenge are spread throughout the partnership.

Awareness of and approaches to safeguarding practice continue to develop across the partnership, often led by the Learning and Development Sub-Group. For example, 70% of schools have received training and adopted the Resilience Framework, 200 individuals participated in training leading towards Adverse Childhood Experiences and Trauma Informed Practice, more than 50 individuals became Neglect Champions and there is significant uptake of the Neglect toolkit. The training and development opportunities are backed via the WSCP website where, One Minute Guides and 7-Point Briefings cover major topics such as Professional Curiosity, Trauma Informed Practice, and Child Exploitation.

Individual services report on the auditing of their own practice and share findings with partners, along with the resulting actions and recommendations. For example, NHS partners have audited their response to patient contacts where safeguarding concerns are evident and also the engagement with and from GP's in safeguarding practice.

In addition, the WSCP Business Unit lead multi-agency audits on a regular basis and the resulting actions are shared and implementation of the actions and their impact is reported appropriately. For example, a multi-agency audit of several very challenging "missing" episodes was undertaken by services in this reporting period.

The partnership has complied with the guidance in respect of serious incidents, reporting as required to the National Panel on each occasion. The Executive has appropriately followed the statutory guidance in deciding between the Child Safeguarding Practice Review (CSPR) and Rapid Review process when required. National Panel has agreed with this decision on all those occasions and has received the resulting reports within timescale. During the previous reporting period, two Rapid Reviews in particular resulted in 33 actions for services, these were followed up via a 'Challenge and Assurance' event in June 2023 during this reporting period. Services were invited to present their progress in implementing the multi-agency and single agency actions arising from these reviews. There was ample evidence of learning from review and impact of remedial actions. This search for evidence of impact was also supplemented by a survey of frontline practitioners which sought to examine the extent to which recommendations for practice were received and understood by those staff across agencies. The partnership plans to utilise this approach as a regular means to evidence direct impact from frontline practitioners.

Introduction

Partnership Structure &
Governance

Progress made since 2022-
23

Independent Scrutineer Yearly Summary

Executive

Child Safeguarding Practice
Review Group (CSPRG)

Child Death Overview Panel
(CDOP)

Multi-Agency Child
Exploitation (MACE) Group

Strategic and Delivery
Learning & Development
(L&D) Groups

Safeguarding Effectiveness
Group (SEG)

Safeguarding Advisor for
Education

Communication and
Engagement

Key Areas of Focus for
2024-25

The Safeguarding Partners now have a well-developed and effective Early Help system which draws services together in support of children and families at the early stages of [the Continuum of Need](#). The WSCP website details the range of offers under the [Wakefield Families Together approach](#) this includes Family and Youth Hubs, and the 'Team Around' approaches to schools and early years settings.

In December 2023 the Department for Education (DfE) refreshed the statutory Working Together to Safeguard Children guidance. This was presented to the Executive early in 2024. The Executive was able to conclude that the vast majority of requirements of the legislation were already met by WSCP, emphasising the extent to which services already collaborate as equal partners and seek to improve and learn from practice through challenge, training and development.

Throughout the reporting period there were a number of practice themes which are central to improving practice and the key to keeping children safe in complex and challenging cases.

As with almost all safeguarding practice reviews the importance of:

- timely sharing of information across agencies
- listening to the voice of children and families
- enabling professional curiosity
- welcoming peer challenge, allowing it to become almost expected in complex cases

The possibility that some of these challenges can be better met through group, shared or multi agency supervision and the appointment of complex case coordinators to ensure all services hold all information equally are practices that services are beginning to consider.

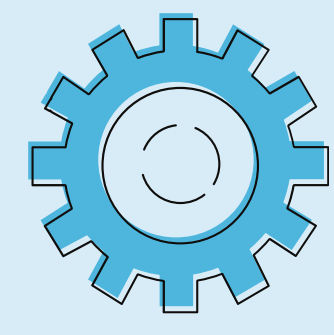
I have no doubt that WSCP is high performing and am assured that it continually strives to improve, learn from practice, welcomes challenges from both between partners and I, and seeks to respond appropriately and openly.



Stuart Smith

Independent Scrutineer

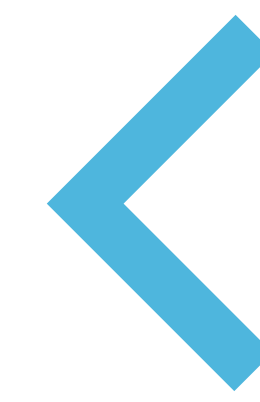
A handwritten signature in black ink, appearing to read 'Stuart Smith', written in a cursive style.



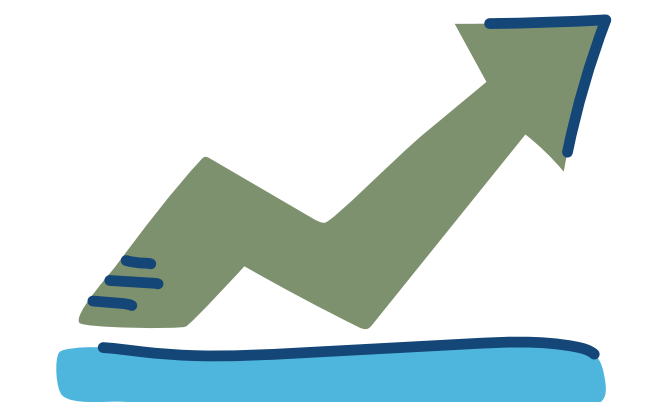
Function of the Executive

Has strategic oversight for all the work WSCP undertakes, having responsibility for driving the business and the development of the partnership forward through a delivery plan, ensuring compliance in having effective multi-agency safeguarding arrangements in place.

Key Areas of Development



What impact has this made?



1

Overseen significant progress of the WSCP Delivery Plan

1.1

The work WSCP undertakes is now more evidenced based and able to articulate the difference the partnership makes to the lives of children and families. Across the 13 priorities, there are 44 individual actions to which the majority (31) have a completed status and are either implementing or fully sustained in everyday practice. The remaining actions (13) are ongoing. Key highlights which have been progressed via the delivery plan are captured under Key Areas of Development identified in 2022-23 from page 13 and also include:

- Reduction in the number of contacts which do not meet Children’s Social Care threshold, coupled with a significant increase in the amount of children and families accessing support from Family Hub, Youth Hub, Team Around a School and Targeted Early Help provision suggests children and families are accessing the right support, at the right time by the right service
- Continued positive trend of no children in the district dying or being seriously harmed due to unsafe sleep, which is a significant change given the district historically averaged higher than regional and national rates year-on-year of sudden infant death until 2021-22. This year, further developments have consisted of Health Visitors and Community Midwives viewing where an infant sleeps as routine practice, along with the roll out of Every Sleep a Safer Sleep training across all the partnership workforce, including West Yorkshire Police, who in addition, have developed a service specific training

2

Initiated plans to implement the required changes as prescribed within Working Together to Safeguard Children 2023

2.1

Reviewed and updated in draft the partnership’s Multi-Agency Safeguarding Arrangements document, ahead of it being published by December 2024.

2.2

Developed new arrangements to strengthen the linkage and visibility of WSCP to Chief Executives of the Local Authority and Integrated Care Board respectively, along with the Chief Constable of West Yorkshire Police.

2.3

Reviewed education representation and proposed a Multi-Academy Trust Chief Executive Officer attends the Executive with close working taking place with a wider Education & Inclusion Executive which consists of trust leaders.

Introduction

Partnership Structure & Governance

Progress made since 2022-23

Independent Scrutineer Yearly Summary

Executive

Child Safeguarding Practice Review Group (CSPRG)

Child Death Overview Panel (CDOP)

Multi-Agency Child Exploitation (MACE) Group

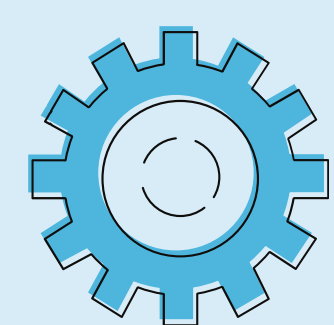
Strategic and Delivery Learning & Development (L&D) Groups

Safeguarding Effectiveness Group (SEG)

Safeguarding Advisor for Education

Communication and Engagement

Key Areas of Focus for 2024-25



Function of the Executive

Has strategic oversight for all the work WSCP undertakes, having responsibility for driving the business and the development of the partnership forward through a delivery plan, ensuring compliance in having effective multi-agency safeguarding arrangements in place.

KEY STEPS for 2024-25



Key Areas of Development



3

Continued to produce a multi-agency safeguarding data set which provides an overview of the vital signs of the child safeguarding system, generating analysis, and informing action for system and practice development

3.1

To help enable the Executive to determine if the safeguarding system is working well and to identify any issues at an early stage, the Partnership receives a performance report with a range of key performance of indicators (KPIs) some of which have targets linked to them. An analysis from each report is presented highlighting where targets have been achieved evidencing good performance, where there has been a change in data compared with previous months and any targets that have not been achieved against KPIs. Following discussion of performance, the Safeguarding Effectiveness Group is tasked to consider further action. Below is a summary of performance seen in 2023-2024.

A high level of performance was sustained or improved across a range of KPIs:

- Rate of referrals to Children's Social Care
- Referral decision making timeliness by Integrated Front Door
- Re-referrals to Children's Social Care

For the following KPIs there was generally good performance although the target was not achieved every month and for some performance fluctuated:

- Engagement of children in return home interviews
- Completion of Section 47 Investigations within timescale
- Attendance at Strategy Discussion meetings by most partners
- Initial Child Protection Conferences held in timescale

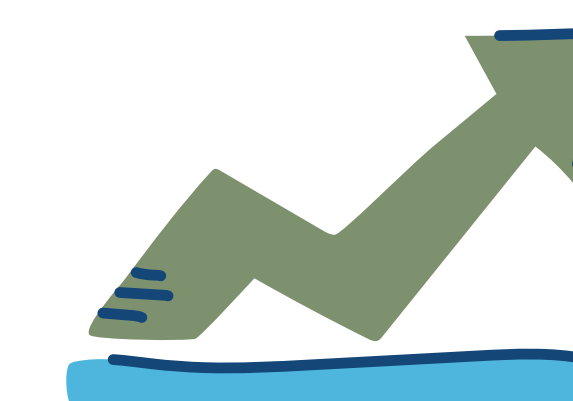
Observations / development still required across the following KPIs:

- Percentage of contacts not reaching threshold for Children's Social Care remained below target
- LADO allegation meetings and discussions held in timescale

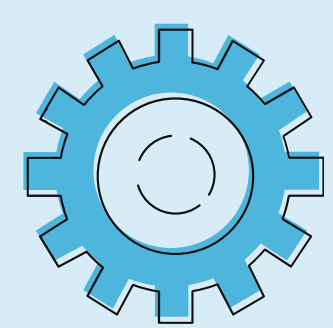
3.2

During the period a decreasing trend was seen in the number of children on a Child Protection Plan. The report has been updated this year with the inclusion of revised data CAMHS data, with the aim of showing a clearer picture of the response to demand for mental health support and more detail is now included on children vulnerable to exploitation in response to requests from the Executive.

What impact has this made?



- Complete final implementation of the partnership's existing delivery plan
- Produce a new partnership delivery plan for 2025-28, ready for implementation from April 2025
- Implement the new partnership arrangements as detailed within the updated Multi-Agency Safeguarding Arrangements document when published by December 2024



Function of the CSPRG

Considers serious safeguarding incidents concerning children where abuse and/or neglect has been suspected to have caused or contributed to the incident, with a view to undertaking reviews to identify multi-agency learning to develop safeguarding systems and practice.

Key Areas of Development



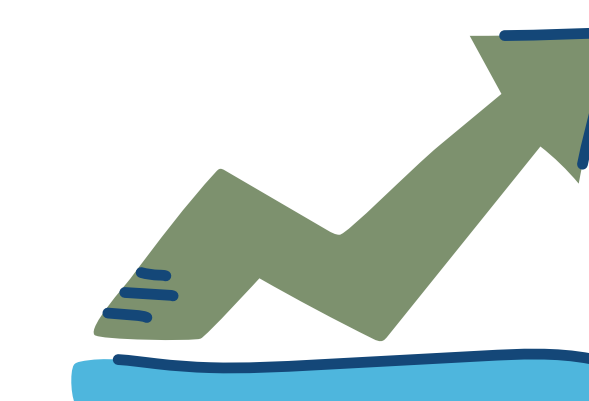
1

Undertaken four reviews respectively concerning serious incidents to child in order to identify learning for multi-agency system and practice

2

Completed the implementation of the recommendations from two action plans generated from previous safeguarding reviews

What impact has this made?



1.1

The reviews concerned a tragic death of an infant, two separate incidents of unexplained injury, and a child with complex health needs. The findings from the reviews identified specific learning for services along with wider action the partnership needs to develop which is being implemented by WSCP through its sub-groups. Some of the actions remain in progress, with some being completed. In summary these include:

- Ensuring case supervision helps to generate actions which reflect current need and are not repetitive **(implemented)**
- Establishing further Young Carers referral routes **(implemented)**
- Whether there is an active role or not, School Nursing remains involved in Child Protection cases to maintain oversight of a child's health needs **(implemented)**
- When identifying health needs of children, ensure parenting and environmental factors are considered as possible contributions to presentations **(implemented)**
- Parental mental health needs and medication a parent is receipt of is considered proportionately to assess any potential impacts on a child **(implemented)**
- Developing multi-agency group supervision to enable practitioners to jointly reflect on practice, on situations which feel complex and how services are working together to effect change **(in progress)**
- Strengthening information management systems, to ensure there is a required review of records when a child has attended emergency department on three or more occasions within a year **(implemented)**
- Developing multi-agency guidance in respect of the accumulation of minor injuries to mobile children **(in progress)**
- Importance of considering faltering growth as a possible indicator of abuse **(implemented)**
- Effective use of the assessment of non-mobile babies with injuries including bruises, burns and scalds protocol in countering confirmation bias **(implemented)**
- Importance of practitioners always maintaining a view an unexplained bruise in a non-mobile infant (especially under four-months old) is high risk for abuse pending further investigations **(implemented)**
- Developing multi-agency learning offer in respect of recognising and responding to safeguarding need to children who have complex health needs **(in progress)**

2.1

In addition to the learning implemented from the reviews undertaken as listed above, further system and practice development has been achieved as a result of the completion of actions from previous safeguarding reviews which took place prior to this year, this includes:

- Developed new Missing From Home and Care guidance for parents and carers of children who have been reported missing
- Rolled out training to frontline police officers in respect of the effective use of orders to disrupt and stop child exploitation
- Strengthened safety plans by ensuring they are reflective of the lived experience and history of a family to be effective in mitigating risk
- Ensured health trust have an effective system in place to follow up and appropriately share information where children were not brought to appointments
- Improved Step Up Step Down process between Children's Social Care and Targeted Early Help, which has led to a strengthened transition of support for children and families

Introduction

Partnership Structure & Governance

Progress made since 2022-23

Independent Scrutineer Yearly Summary

Executive

Child Safeguarding Practice Review Group (CSPRG)

Child Death Overview Panel (CDOP)

Multi-Agency Child Exploitation (MACE) Group

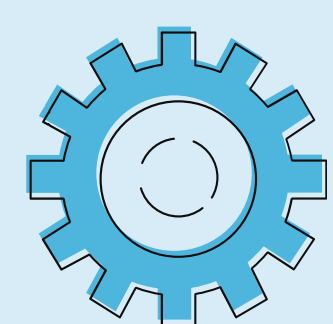
Strategic and Delivery Learning & Development (L&D) Groups

Safeguarding Effectiveness Group (SEG)

Safeguarding Advisor for Education

Communication and Engagement

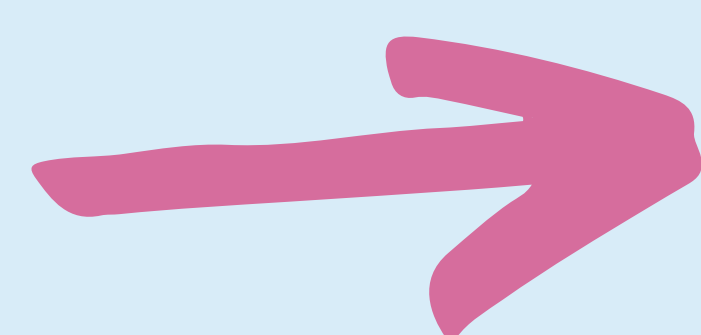
Key Areas of Focus for 2024-25



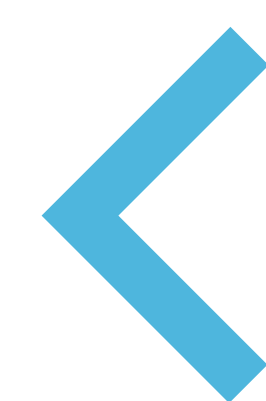
Function of the CSPRG

Considers serious safeguarding incidents concerning children where abuse and/or neglect has been suspected to have caused or contributed to the incident, with a view to undertaking reviews to identify multi-agency learning to develop safeguarding systems and practice.

KEY STEPS for 2024-25



Key Areas of Development



3

Ran an inaugural safeguarding practice review assurance event

3.1

In line with the wider partnership arrangements in increasing the robustness of its scrutiny, the event provided further opportunity to evidence the impact safeguarding practice reviews have generated in making positive developments to safeguarding systems and practice.

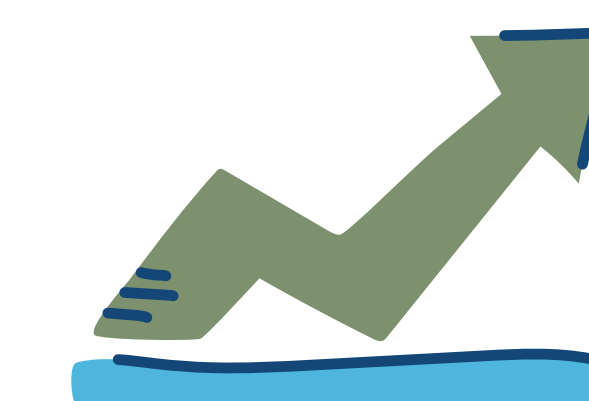
3.2

The event focussed on two reviews undertaken in late 2022. Services who were attributed actions from the reviews were invited to present how actions have been implemented, what impact the changes have made to their safeguarding systems and practices and where further work is still required. The findings included:

- Improved information sharing system between the Probation Service and partner agencies, supported by a redesigned safeguarding enquiry form and a proposal for a Probation Practitioner to be placed within the Integrated Front Door alongside partner agencies
- Set timeframes pre-release from prison for multi-agency planning to take place
- Delivery of a safeguarding children training programme for Probation staff
- Further strengthening of the Person Posing Risk Panel where partner agencies including Children's Social Care and Probation assess and put plans in place to manage and mitigate the risk individual's pose to children
- Child Exploitation Risk Assessment Meeting guidance was reviewed and updated with Child Exploitation Drop In Clinics launched for practitioners to use as a consultation forum
- Promotion of the Children Vulnerable to Exploitation Service and the role of the Risk Assessment meetings
- Delivery of a training programme for neighbourhood police officers on the types of orders which can be used as a means to disrupt child exploitation, this is ongoing training across the district
- Mid Yorkshire Teaching Trust and 0-19 Service have an established emergency department attendance pathway, which triggers a follow up contact by 0-19 Service after a child attends at the emergency department
- Children Social Care and the Targeted Early Help Service have an updated process in Step Up Step Down which consists of joint visits between the services for all cases which are stepped down; six weekly audit cycles; updated operating procedures; review of plans of step down cases after three months
- Health services recognised an opportunity to develop concealed pregnancy practice guidance to further strengthen the Multi-Agency Pregnancy Liaison Assessment Group (MAPLAG) which as a function to discussed concealed pregnancy

- Continue to undertake safeguarding practice review assurance events as a means to contribute in understanding the sustained impact generated from reviews
- Maintain the oversight of learning identified from safeguarding practice reviews and ensure recommendations are implemented across safeguarding systems and practice

What impact has this made?



Introduction

Partnership Structure & Governance

Progress made since 2022-23

Independent Scrutineer Yearly Summary

Executive

Child Safeguarding Practice Review Group (CSPRG)

Child Death Overview Panel (CDOP)

Multi-Agency Child Exploitation (MACE) Group

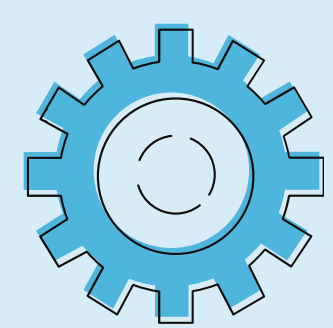
Strategic and Delivery Learning & Development (L&D) Groups

Safeguarding Effectiveness Group (SEG)

Safeguarding Advisor for Education

Communication and Engagement

Key Areas of Focus for 2024-25



Function of the CDOP

Considers all child deaths in the district, reviewing information to analyse the circumstances, confirm cause of death, determine any contributing factors and identify learning arising which may prevent future child deaths.

Introduction

Partnership Structure & Governance

Progress made since 2022-23

Independent Scrutineer Yearly Summary

Executive

Child Safeguarding Practice Review Group (CSPRG)

Child Death Overview Panel (CDOP)

Multi-Agency Child Exploitation (MACE) Group

Strategic and Delivery Learning & Development (L&D) Groups

Safeguarding Effectiveness Group (SEG)

Safeguarding Advisor for Education

Communication and Engagement

Key Areas of Focus for 2024-25

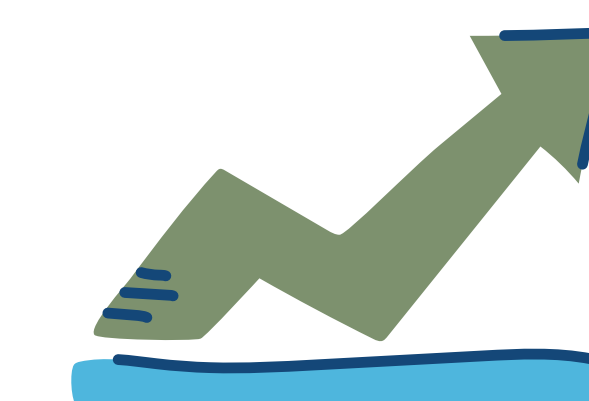
Key Areas of Development



1 Maintained a well-established CDOP

2 Using findings from CDOP to inform key campaigns and awareness

What impact has this made?



1.1 Wakefield reviewed 25 historical deaths of children (deaths occurred between 2020 – 23) at CDOP.

Of the 25 deaths reviewed (deaths occurred in 2020 – 22), 13 (52%) had one or more modifiable factors identified (cases can have multiple modifiable factors). These were:

- Parental smoking (7)
- Parental substance misuse (3)
- Child substance misuse (1)
- Unsafe sleeping practices (3)
- Non-swimmer (2)
- No visible safety signage / life saving devices at waterside (2)
- A lack of clinical awareness of the risk of pre-term labour in Monochronic Diamniotic (MCDA) twin pregnancies (2)
- Parental alcohol use (1)

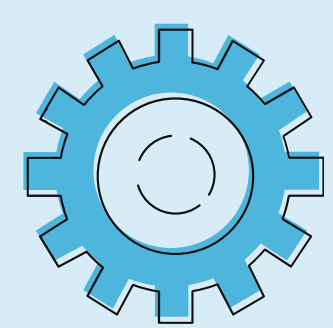
1.2 Of the 25 deaths reviewed, 7 were unexpected and all the categories were:

- Perinatal / neonatal event (7)
- Chromosomal, genetic, and congenital anomalies (5)
- Sudden, Unexpected, unexplained death (3)
- Chronic Medical Condition (3)
- Trauma and other external factors including medical/surgical (3)
- Malignancy (2)
- Infection (1)
- Suicide/deliberate self-harm (1)

1.3 Identifying modifiable factors from a breadth of deaths has enabled developments to be undertaken which is informed by need. Across 23/24 CDOP undertook specific developments, which included recurring Safer Sleep Campaign and Water Safety respectively.

1.4 Commenced sending letters to bereaved parents and carers, explaining the purpose CDOP and how they are able to be involved should they wish to be. This process has been positively received from parents and carers in ensuring their voice is heard and acted upon, along with being supported during the most challenging time for a parent and carer.

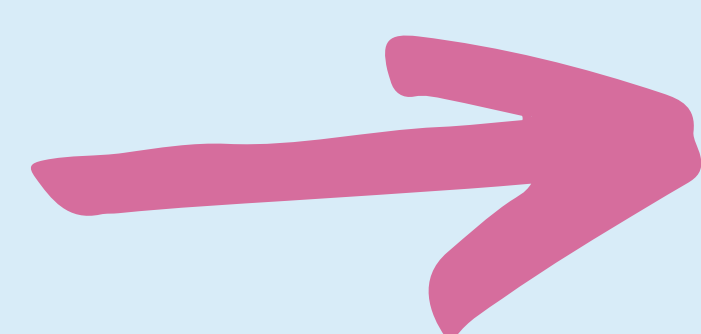
2.1 Since 2019 there has been three deaths in the district suspected to have been due to drowning in open water. The work of CDOP led to the creation of a dedicated [WSCP Water Safety Page](#), water safety information, resources and messaging being regularly promoted via the WSCP e-bulletin, CDOP newsletter, and social media, [Yorkshire Water live assemblies](#) to schools. This work overlapped and culminated into a Be Water Wise campaign as part of the Wakefield District water safety group who produced a [series of films](#), including one which was based on the incidents of drowning concerning children.



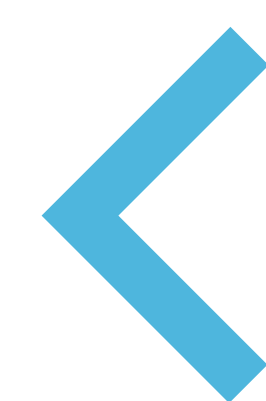
Function of the CDOP

Considers all child deaths in the district, reviewing information to analyse the circumstances, confirm cause of death, determine any contributing factors and identify learning arising which may prevent future child deaths.

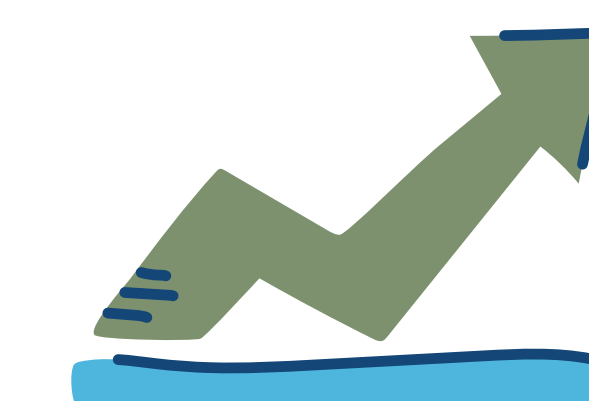
KEY STEPS for 2024-25



Key Areas of Development



What impact has this made?



Since the Be Water Wise campaign launched, the film series has been viewed over 6,000 times and has been incorporated into school's water safety delivery, along with being viewed at the district's Build Our Futures Youth Summit. The WSCP Water Safety page, for the yearly reporting period has had 1,154 views by 645 people which is the highest viewed single topic page on the WSCP website for the year.

2.2

Published a [bereavement support page on the WSCP website](#), to provide a single point of access for bereaved parents and carers to help ensure they can access any support they wish. This page is shared with parents and carers as routine practice by those who provide immediate support in the aftermath of a child death.

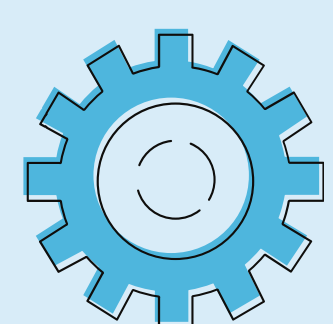
2.3

The partnership has continued to invest significant effort into reducing sudden deaths of infants due to unsafe sleep. This has included:

- Reviewed several cases where there was use of unsafe sleeping equipment and notified the Coroner's Office and the National Child Mortality Database (NCMD). This has led to the NCMD incorporating this into a national training, safety and engagement programme, coproducing a video with the Lullaby Trust and Royal College of Midwifery to be used in training with midwives to further support conversations with families about creating a safer sleep environment
- Commissioned specific training on sudden death and unsafe sleep for anybody who works or volunteers with children and families via the [Lullaby Trust](#)
- Continued to embed the [Wakefield Safer Sleep Standard](#)
- Promotion of the [safeguarding babies and infants on the WSCP website](#)
- Health Visitors and Community Midwives seeing where an infant sleeps as part of routine enquiry
- Roll out of Every Sleep a Safer Sleep Multi-Agency Risk Minimisation training. Further information on this training can be found on page 11

This work appears to be demonstrating continued impact with there being no death of a baby suspected to have been caused by unsafe sleep since early 2022. Prior to this period in 2022, the previous death was in 2020.

- Multi-agency learning from child deaths to continue to be adopted on actions plans and where appropriate stepped across to the WSCP Learning & Development sub-group to progress and to action
- Continue to monitor the work CDOP has driven in respect of safer sleep and water safety to ascertain the impact achieved
- Continue to review all deaths which have an open status to CDOP to ensure there is no undue delay in progressing to panel
- Develop consistency with Kirklees and Calderdale as part of the Tri-CDOP in the processes and administration
- CDOP meetings to continue to have a focus on sharing good practice and advice, complementing the process in review of deaths

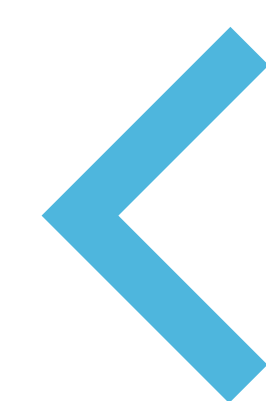


Function of the MACE Group

Develops, implements, and monitors the Wakefield MACE Action Plan to ensure there is a co-ordinated multi-agency response to child exploitation and assessment of risk posed outside the home.

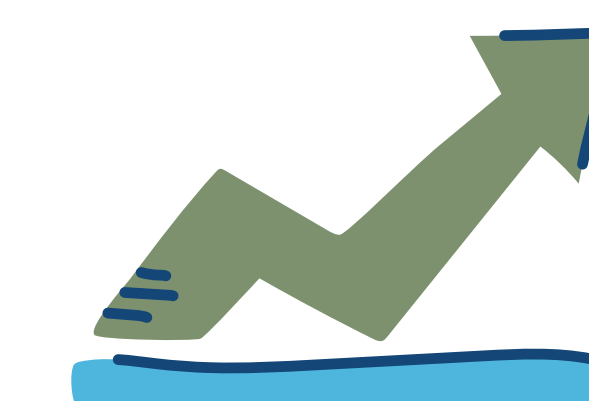
- Introduction
- Partnership Structure & Governance
- Progress made since 2022-23
- Independent Scrutineer Yearly Summary
- Executive
- Child Safeguarding Practice Review Group (CSPRG)
- Child Death Overview Panel (CDOP)
- Multi-Agency Child Exploitation (MACE) Group**
- Strategic and Delivery Learning & Development (L&D) Groups
- Safeguarding Effectiveness Group (SEG)
- Safeguarding Advisor for Education
- Communication and Engagement
- Key Areas of Focus for 2024-25

Key Areas of Development



1 Updated MACE strategy for 2024 - 27

What impact has this made?

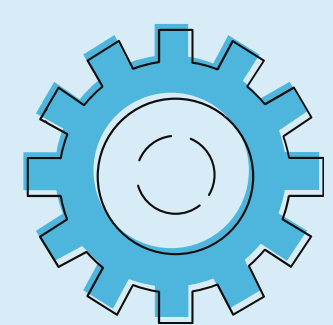


1.1 The updated strategy has incorporated the multi-agency practice principles for responding to child exploitation and extra-familial harm, and has a renewed focus on early identification, disruption, coordination, response, protection and support for children and families at risk of exploitation.

1.2 Progress against the strategy this year has included the following:

- The development of Child Exploitation Multi-Agency Clinics for practitioners to attend where they can receive advice and guidance from Children’s Social Care, West Yorkshire Police, health services education, St Giles, Liaison and Diversion, and Youth Justice Service
- Evidence of increasingly impactful provision delivered by the Children Vulnerable to Exploitation Service, through increased joint visits with police and ensuring trigger plans are in place for all children who are open to the service
- Increase in police disruption visits (173) from 152 in 2022-23
- Updated terms of reference to the victim RAM and perpetrator RAM respectively
- Introduction of a Vulnerability Assessment Tracker (VAT), providing a more insightful data analysis to identify trends to inform proactive responses to individual children, perpetrators and also areas within the district
- Extension in health service representation beyond the current membership

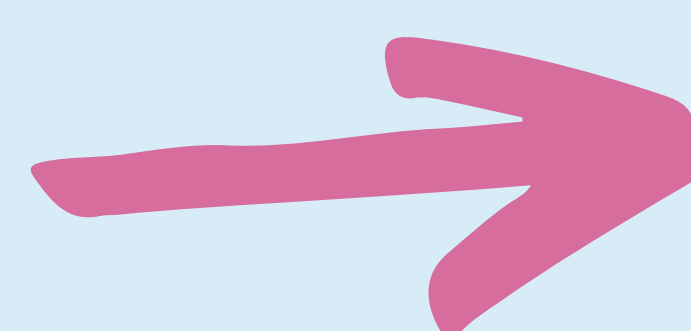




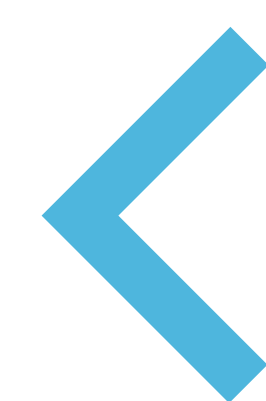
Function of the MACE Group

Develops, implements, and monitors the Wakefield MACE Action Plan to ensure there is a co-ordinated multi-agency response to child exploitation and assessment of risk posed outside the home.

KEY STEPS for 2024-25



Key Areas of Development



2

Launch of the [Speak Up, Stand Up, Stop Exploitation section on the WSCP Knowledge Hub](#)

2.1

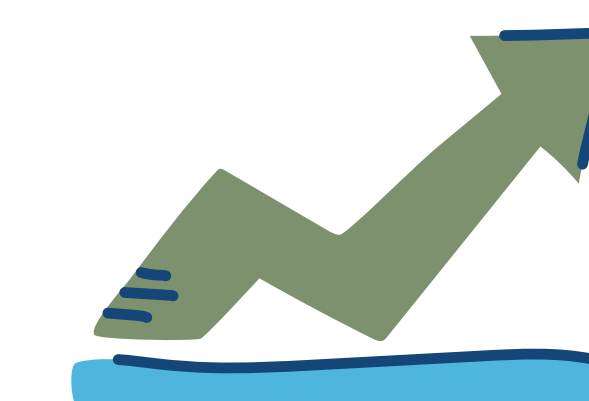
The launch of the [Speak Up, Stand Up, Stop Exploitation section on the WSCP website](#) took place on Child Exploitation Awareness Day and was a flagship piece of work for WSCP in supporting those who work or volunteer with children and families being able to prevent, identify, disrupt and stop child exploitation.

The online resource provides a single point of access to all the current information, videos, resources and learning offers to tackle exploitation. Covering the broad range of types and areas:

- Child Criminal Exploitation, including County Lines
- Child Sexual Exploitation
- Modern Slavery & Child Trafficking
- Child Financial Exploitation
- Online Exploitation
- Missing From Home & Care
- Extra-Familial Harm

Despite only launching in March, the evidence available has highlighted the resource has been well received. Analytic evidence shows the resource has been viewed over 1,050 times by 445 people and has been shortlisted for a national Local Government Chronicle (LGC) Workforce award.

What impact has this made?



- Measure the impact of the Speak Up, Stand Up, Stop Exploitation section on the WSCP Knowledge Hub
- Further embed the updated strategy and create an updated action plan
- Create a schedule of bite-sized multi-agency Learning Exchange offers in respect of different types and areas associated with exploitation
- Enhance the child exploitation data set to measure the impact of intervention delivered in preventing, identifying, disrupting and stopping child exploitation
- Continue to run regular quality assurance on the effectiveness of child exploitation arrangements in order keep pace to respond to the ever changing ways children face risk and vulnerability
- Create new sections of the Speak Up, Stand Up, Stop Exploitation for communities and businesses, parents and carers, and children respectively

Introduction

Partnership Structure & Governance

Progress made since 2022-23

Independent Scrutineer Yearly Summary

Executive

Child Safeguarding Practice Review Group (CSPRG)

Child Death Overview Panel (CDOP)

Multi-Agency Child Exploitation (MACE) Group

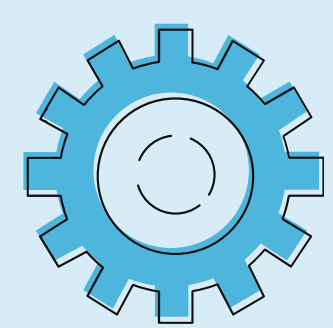
Strategic and Delivery Learning & Development (L&D) Groups

Safeguarding Effectiveness Group (SEG)

Safeguarding Advisor for Education

Communication and Engagement

Key Areas of Focus for 2024-25



Function of the Strategic and Delivery L&D Group

Responsible for responding to the multi-agency safeguarding learning and development of needs of the children and families workforce by developing, coordinating and delivering learning opportunities such as multi-agency training, conferences, masterclasses and safeguarding resources.

Introduction

Partnership Structure & Governance

Progress made since 2022-23

Independent Scrutineer Yearly Summary

Executive

Child Safeguarding Practice Review Group (CSPRG)

Child Death Overview Panel (CDOP)

Multi-Agency Child Exploitation (MACE) Group

Strategic and Delivery Learning & Development (L&D) Groups

Safeguarding Effectiveness Group (SEG)

Safeguarding Advisor for Education

Communication and Engagement

Key Areas of Focus for 2024-25

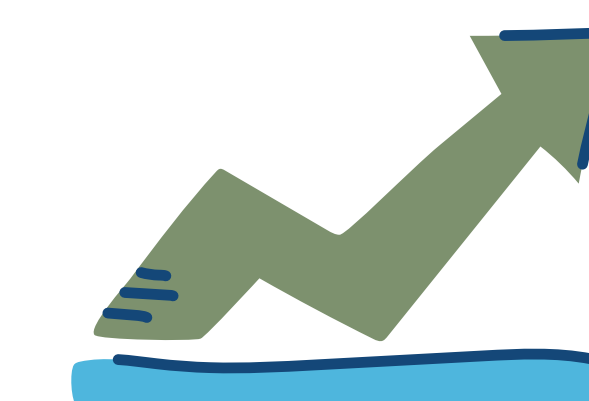
Key Areas of Development



1 Delivered a wide range of multi-agency learning and development for the workforce across the partnership

2 Continued roll out of the multi-agency neglect training, online neglect toolkit and neglect champion programme

What impact has this made?



1.1 Across the year, over 920 practitioners from the children and families workforce across the partnership accessed a range of learning which included:

- Working Together to Safeguarding Children – A Shared Responsibility training
- Managing Allegations Against Those Who Work or Volunteer with Children training
- Multi-Agency Neglect training
- UK Safer Internet Centre Online Safety Live 2024
- Young Gamers and Gamblers Education Trust (YGAM) – Gaming and Gambling Harms training
- National Centre for Domestic Abuse (NCDV) – Civil Orders training
- Barnardo’s Safeguarding a Child’s Perspective training
- Safer Sleep and Sudden Infant Death training
- Reducing Parental Conflict training
- Safeguarding Week Masterclass – Adversity, Trauma and Resilience

Evaluation feedback drew parallels with the previous year in reporting most attendees highly rated the quality and relevance of learning with over 90% of saying their skills and knowledge had improved as a result of the training they received.

Some of the more specific evaluation reports can be found on the links below:

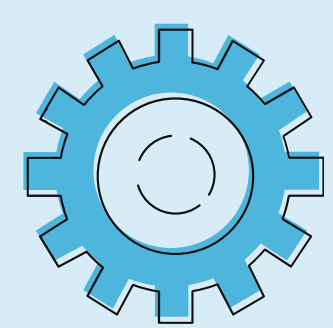
- [Safeguarding Week 2023 evaluation](#)
- [Multi-Agency Neglect training 2023 evaluation](#)

2.1 The roll out of the [multi-agency neglect training](#) and [online neglect toolkit](#), has now become embedded. During 2023/24 there were 160 practitioners across five sessions who attended the training, along with the neglect toolkit being accessed over 4,100 times by over 600 people. To put these figures into context, this is the highest attendance seen on training for recurring courses, and the highest viewed pages on the WSCP website for the reporting year.

2.2 The level of acuity in respect of neglect has fluctuated across the year, but overall remains high, with periods where multiple children have been subject to care proceedings. WSCP’s long term commitment to identifying neglect at the earliest stage and being able to support children and families via early help will continue.

In terms of initial impact, follow up surveys with frontline practitioners (92 respondents) three-months after the launch:

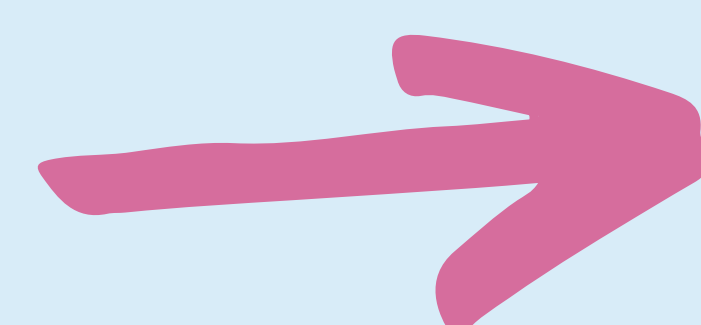
- 67% reported to have either used the toolkit or were planning to do so
- 69% stated they had booked onto the attend training or were planning on doing so
- Specific examples were provided as to how the toolkit was being used in respect of helping decision making, guidance before making a referral, as part of supervision, deliver in team training and share with teams to refresh knowledge and understanding



Function of the Strategic and Delivery L&D Group

Responsible for responding to the multi-agency safeguarding learning and development of needs of the children and families workforce by developing, coordinating and delivering learning opportunities such as multi-agency training, conferences, masterclasses and safeguarding resources.

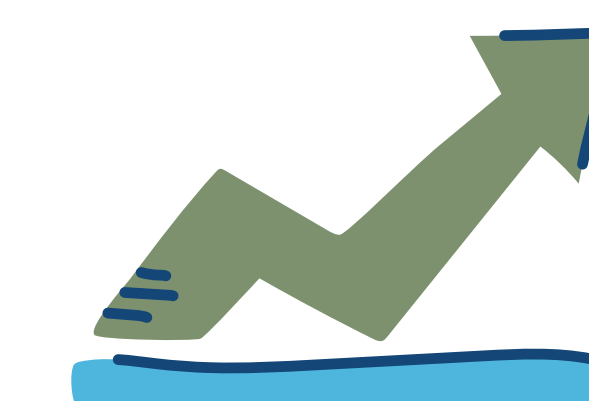
KEY STEPS for 2024-25



Key Areas of Development



What impact has this made?



3

Developed a [Professional Curiosity and Challenge short explanation video](#)

3.1

After launching the [Professional Curiosity and Challenge Learning Briefing](#), initial survey findings informed WSCP most practitioners (92 respondents) were not aware of the briefing. To support further awareness, a short explanation video, a [Professional Curiosity and Challenge page on the WSCP website](#), a [one minute guide](#) and a [dedicated campaign](#) was produced.

3.2

The video, which has been viewed over 380 times, compliments the learning briefing in highlighting what professional curiosity and challenge is, what it means to be curious and challenging, why it is important and approaches to take when looking, listening, asking and checking out. In addition to the video, the page and one minute guide were viewed and accessed over 1,000 times by nearly 400 people. Follow up training evaluations and audit activity has demonstrated an increase in awareness and use of the learning briefing in supporting practitioners with being professionally curious and challenging.

4

Continued to publish a range of safeguarding resources including [One Minute Guides](#), [7-Point Briefings](#), videos providing easy to access information across a variety of safeguarding topics

4.1

Across the year, activity regarding the partnership's learning resources has continued to progress strongly, in aiming to make safeguarding inclusive and accessible for all.

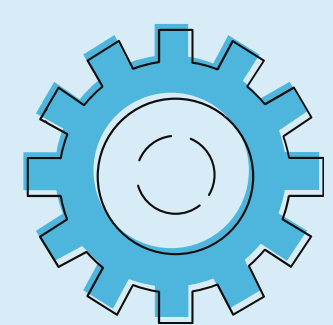
4.2

[One Minutes Guides](#) in 23/24 have been developed on child criminal, sexual, financial, online exploitation respectively, missing from home and care, contextual safeguarding, sudden unexpected death in childhood, controlling and coercive behaviour, bullying, understanding sexual behaviours, harmful sexual behaviour panel, professional curiosity and challenge and adverse childhood experiences.

4.3

[7-Point Briefings](#) have provided key headlines on three safeguarding reviews concerning a baby, infant and teenage child respectively. The key information detailed within the briefings enables findings in relation to learning to be disseminated to frontline practitioners in a more concise and proportionate manner as opposed to lengthy reports.

- Continue to develop offers and resources of bite sized learning alongside face-to-face training, which are needs led and primarily informed by multi-agency quality assurance and safeguarding review activity
- Working alongside Research in Practice to develop two workshops in: Working with families where engagement is challenging and Working Effectively with Men in Families
- Roll out an impact evaluation schedule across any learning and development WSCP develops, providing analysis as to how learning offers are impacting on practice



Function of the SEG

Oversees the multi-agency effectiveness of the partnership and individual services work in relation to safeguarding children through data analysis, assurance activity and procedure.

Introduction

Partnership Structure & Governance

Progress made since 2022-23

Independent Scrutineer Yearly Summary

Executive

Child Safeguarding Practice Review Group (CSPRG)

Child Death Overview Panel (CDOP)

Multi-Agency Child Exploitation (MACE) Group

Strategic and Delivery Learning & Development (L&D) Groups

Safeguarding Effectiveness Group (SEG)

Safeguarding Advisor for Education

Communication and Engagement

Key Areas of Focus for 2024-25

Key Areas of Development



1 Undertook a range of multi-agency assurance activity in relation to Early Help, Missing From Home and Care, and Mental Health respectively

1.1 Learning identified as result of the multi-agency audit which is overseen by the Safeguarding Effectiveness Group includes:

- Services strengthening visibility of information and notifications on systems when children and families are in receipt of early help
- Health partners implementing processes and guidance to effectively capture the voice of children and families when they are accessing services over a shorter, time limited period
- Promotion of appropriate tools and assessments at an early stage such as the neglect toolkit and the Multi-Agency Referral Form
- Strengthening the quality of Public Protection Notices via development of guidance and training and triage processes for frontline police officers
- Strengthen the understanding of the different offers from health providers across the partnership
- Services to encourage understanding and awareness of confirmation bias and how it may impact on perceptions, particularly in respect of fathers and male carers

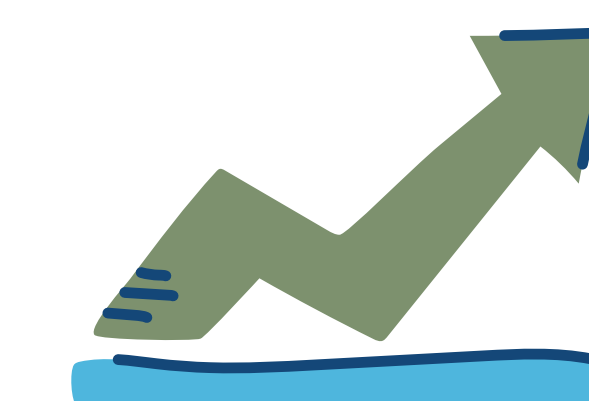
2 Strengthened the system response to Harmful Sexual Behaviour

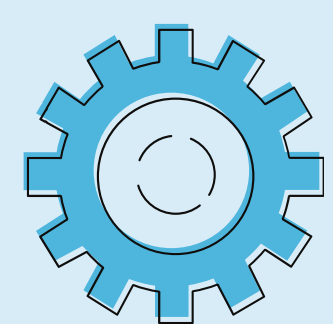
2.1 The SEG initiated a task and finish group which undertook the following developments:

- The role and remit of the Harmful Sexual Behaviour Panel has been reviewed and revised
- The referral pathways to panel have been reviewed and updated and set out within a new one minute guide and updated Terms of Reference
- WSCP delivered a district wide campaign in November 2023 aimed at improving the understanding of harmful sexual behaviour. This includes a host of resources accessible on a new [Understanding Sexual Behaviour page](#) on the WSCP website, including new one minute guides on [Understanding Sexual Behaviours](#) and on the [Harmful Sexual Behaviour Panel](#)
- The overall learning and development offer for the workforce across the partnership has been strengthened. Forensic CAMHS have played a key role in the delivery of training that has been positively evaluate
- Schools received a tailored offer of support through briefings to the Designated Safeguarding Lead (DSL) Forum from the Harmful Sexual Behaviour Panel, the rolling out of the Brook Traffic Light Tool and the continued availability of day to day advice from Link Social Workers and Family Hub duty staff



What impact has this made?





Function of the SEG

Oversees the multi-agency effectiveness of the partnership and individual services work in relation to safeguarding children through data analysis, assurance activity and procedure.

Introduction

Partnership Structure & Governance

Progress made since 2022-23

Independent Scrutineer Yearly Summary

Executive

Child Safeguarding Practice Review Group (CSPRG)

Child Death Overview Panel (CDOP)

Multi-Agency Child Exploitation (MACE) Group

Strategic and Delivery Learning & Development (L&D) Groups

Safeguarding Effectiveness Group (SEG)

Safeguarding Advisor for Education

Communication and Engagement

Key Areas of Focus for 2024-25

KEY STEPS for 2024-25



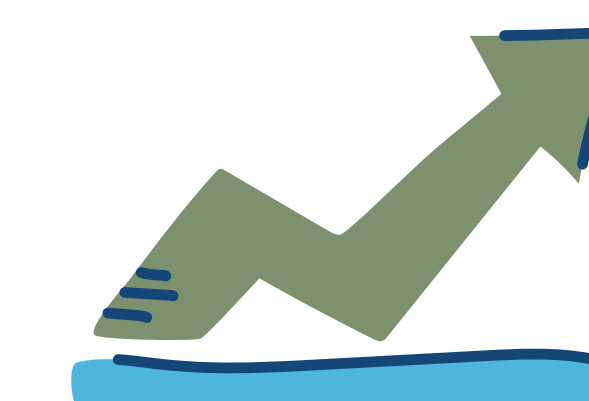
Key Areas of Development



3

Developed a new [WSCP Learning and Improvement Framework](#)

What impact has this made?



3.1

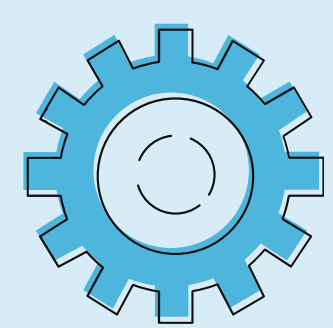
The updated Learning and Improvement Framework clearly makes visible the intrinsic link between quality assurance, learning, improvement and training as continual cycle in enhancing multi-agency safeguarding systems, process and practice

3.2

The Learning and Improvement Framework has enabled the partnership to articulate a needs led in its approach and has acted as guidance in ensuring all the quality assurance and learning offers undertaken are focussed on being able to demonstrate impact on safeguarding systems and practice, and ultimately how this leads to positive outcomes for children and families



- Continued assurance activity to include the current JTAI theme on Serious Youth Violence and multi-agency case audits on neglect and domestic abuse
- Embed the Learning and Improvement Framework
- Once finalised, roll out the faith-based safeguarding guidance and self-assessment tool for Faith Based organisations
- Update the assessment of non-mobile babies with injuries including bruises, burns and scalds protocol, with a view to extending this beyond non-mobile babies to include all children in the context of accumulation of injury



Function of the Safeguarding Advisor for Education

Provides safeguarding advice, support, and training to all schools and colleges in the Wakefield district.

Introduction

Partnership Structure & Governance

Progress made since 2022-23

Independent Scrutineer Yearly Summary

Executive

Child Safeguarding Practice Review Group (CSPRG)

Child Death Overview Panel (CDOP)

Multi-Agency Child Exploitation (MACE) Group

Strategic and Delivery Learning & Development (L&D) Groups

Safeguarding Effectiveness Group (SEG)

Safeguarding Advisor for Education

Communication and Engagement

Key Areas of Focus for 2024-25

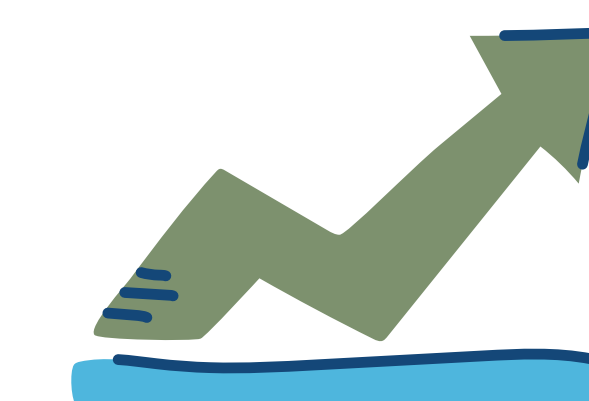
Key Areas of Development



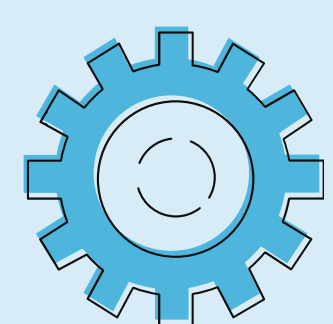
- 1 Maintained delivery of an extensive range of high-quality safeguarding education training in schools and colleges:
 - Safeguarding Basic Awareness Refresher – 59 schools
 - Safer Working Practice – 51 schools
 - Strategic Governor – 15 sessions
 - Designated Safeguarding Lead (DSL) – 25 sessions
 - Internal DSL – 2 sessions
 - Safer Recruitment – 2 sessions

- 2 Continued to delivered a wider safeguarding support offer for all schools and colleges in the districts, which includes standalone [safeguarding school and college section on the WSCP website](#), free to access safeguarding template policy, school and college safeguarding audit and key policy updates

What impact has this made?



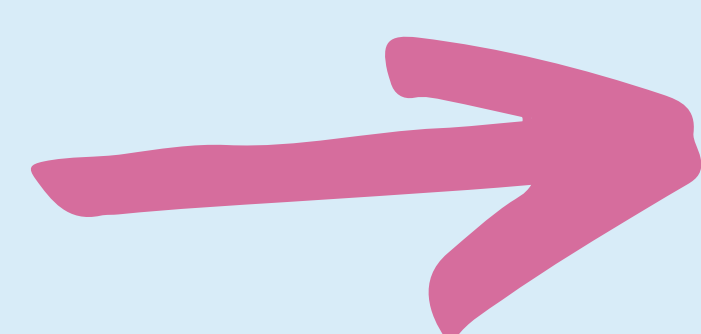
- 1.1 Regular feedback of the training has been extremely positive, this has included ... "Very thorough coverage and detailed knowledge from course leader. Excellent structure of a day and signposting to further information." ... "Clear key messages on important aspects of the DSL role and current up to date information which was linked to key documents such as KCSIE and websites for further information and resources, a brilliant session!"
- 1.2 Further demonstrating the quality of the training and support provided to schools and settings in the district, has been the continued requests for out of area delivery.
- 1.3 Evaluations 3 to 6 months post training delivery demonstrated the impact the training has had. 90% of attendees stated the training was extremely useful to their roles with 10% reporting it was very useful. In many examples, as a result of the DSL training, staff were checking policies, updating procedures and adding current topics and questions to the safeguarding assurance compliance tests they have in place for all staff. One commented that the training increased their confidence in dealing with exploitation cases, another commented that concerns about supply staff could be quickly and correctly managed as a result of the knowledge acquired on training
- 2.1 Schools and colleges accessed an updated safeguarding policy and templates ensuring consistency in the quality of guidance schools and colleges follow in respect of safeguarding children and local service information for Wakefield
- 2.2 All schools and colleges in the district completed the school safeguarding audit. Schools commented on the value in being able to self-assess themselves against the audit, which draws from national and local guidance, to ensure they have all appropriate arrangements in place to safeguard children. Once submitted schools and colleges received feedback from the Safeguarding Education Advisor and appropriate guidance on how to develop areas requiring strengthening. Assurance has been further sought during the year in undertaking follow up visits with selected schools where evidence has been provided as to how they have self-assessed themselves against the compliance factors
- 2.3 Delivered half termly DSL Forums, which continued to provide a range of safeguarding topic tops ups from local and national experts. Followed by a DSL opinion form sent to all schools every half term which collects general themes of what's working well and what can be improved



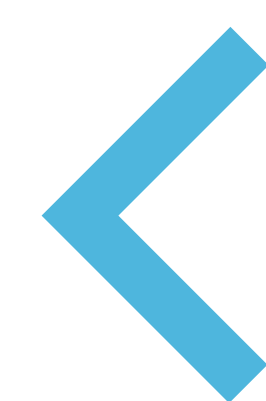
Function of the Safeguarding Advisor for Education

Provides safeguarding advice, support, and training to all schools and colleges in the Wakefield district.

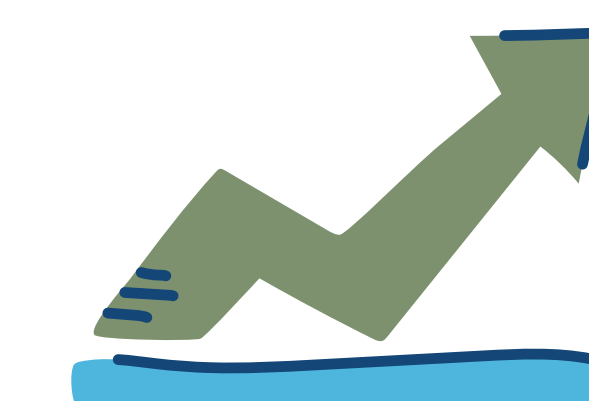
KEY STEPS for 2024-25



Key Areas of Development



What impact has this made?

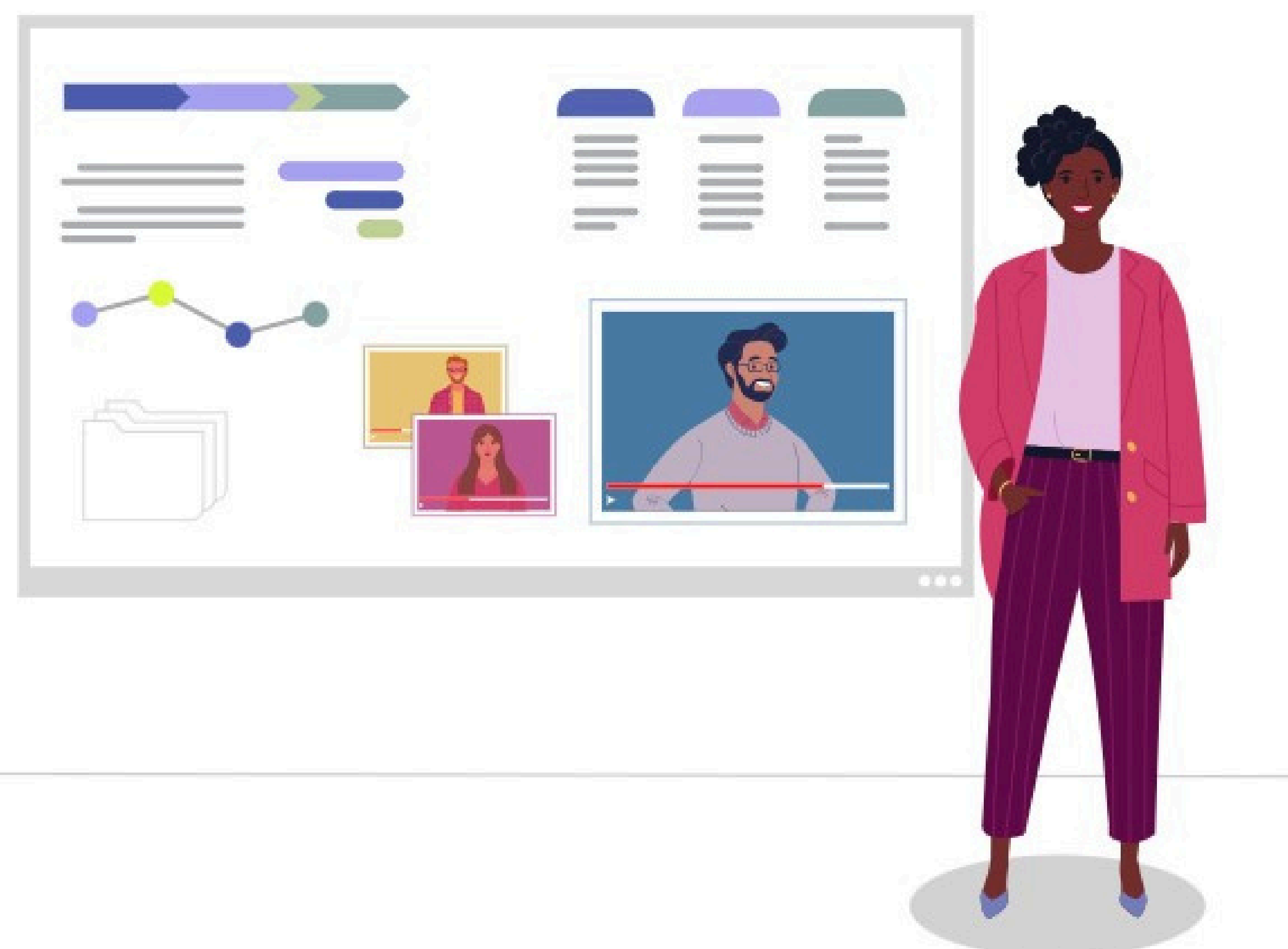


2.4

Delivered face to face DSL peer support meetings for DSLs in secondary schools, colleges and independent schools in the district

2.5

Supported schools and colleges in multi-agency audit activity, and provided representation of education on WSCP sub-groups feeding back to schools via the DSL Forums so ensure two-way communication is effectively maintained

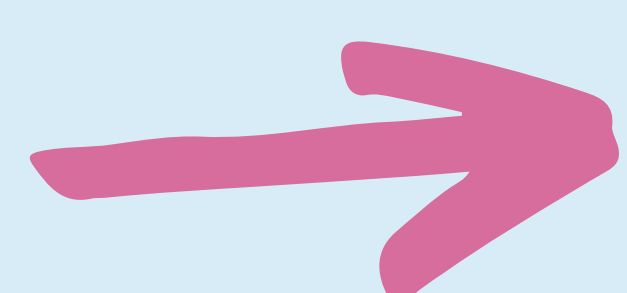


- Continue to support schools in line with changing national and local guidance for education
- Continue to engage effectively and at scale with all DSLs, local and national experts via the DSL Forums and peer support face to face meetings
- Increase Harmful Sexual Behaviour training offer for schools and colleges



WSCP WEBSITE

WSCP has further progressed on how it communicates the work the partnership undertakes. This year has continued to see key developments in the partnership's communication and engagement.



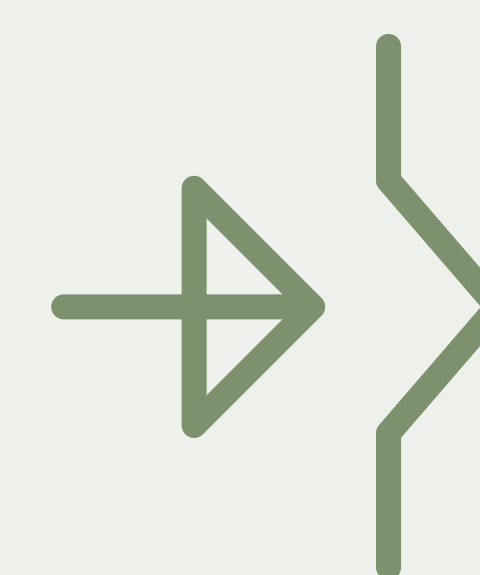
Overview of what has been achieved

During 2023/24 the [WSCP website](#) has continued to be the primary function as to how the partnership communicates all of the work it produces and where those who work or volunteer with children and families visit to access safeguarding children resource, training and information.

A key undertaking this year has the development of the [Speak Up, Stand Up, Stop Exploitation section on the WSCP Knowledge Hub](#). These specific pages are now where practitioners can find all the key child exploitation related information, resources, and guidance in one place.

During the year other pages have been added, including:

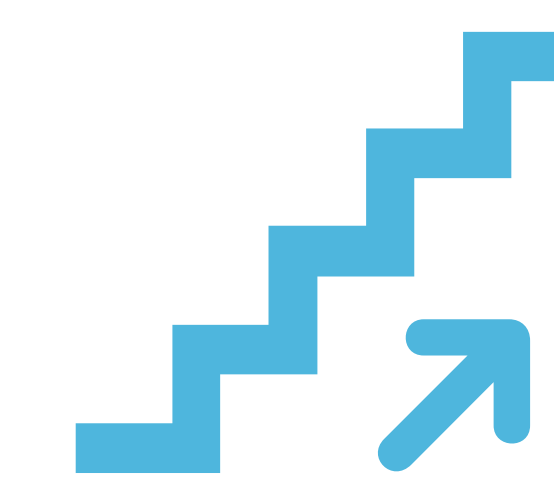
- [Bereavement support for children and families](#)
- [Understanding Sexual Behaviours](#)
- [Learning & Improvement Framework](#)
- [Adversity, Trauma & Resilience](#)
- [Water Safety](#)



The impact of the website

From the website analytics overall user engagement has remained strong. Below is a summary breakdown:

- 79,160 total amount of page views across the year, by 7,733 people, nearly 80% of those were returning visitors, with 20% being recorded as people who have first visited the site
- Similar to last year, the home page (27%), training section (23%), worried about a child (9%), resources section (7%) and schools section (5%) were the top five pages visited. The remaining 29% was in the main made up of visits to safeguarding topic pages which consisted of the neglect toolkit, water safety, adversity, trauma and resilience and understanding sexual behaviours

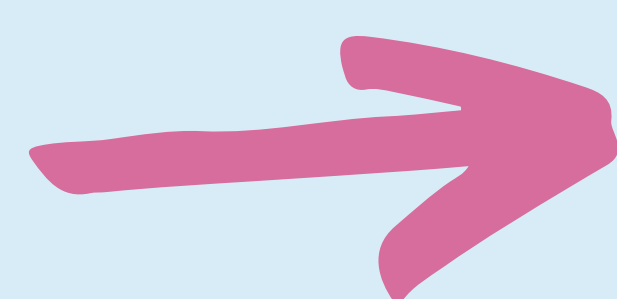


Key steps for 2024-25

- Create new sections of the Speak Up, Stand Up, Stop Exploitation section on the WSCP Knowledge Hub for communities and businesses, parents and carers, and children respectively
- Review the current content, with a view to re-indexing some sections and pages to ensure despite the volume of information, the website remains easy to access and navigate



WSCP Social Media

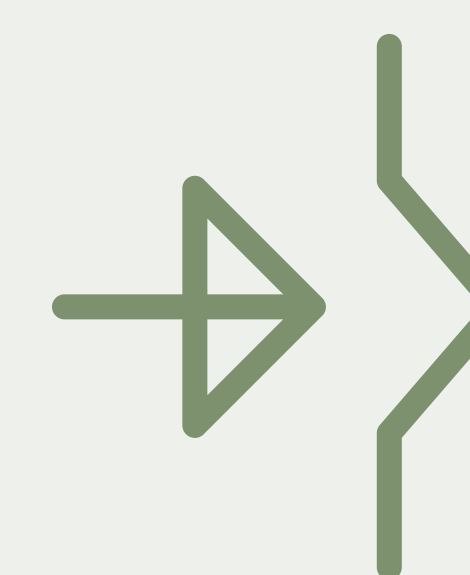


Overview of what has been achieved

WSCP's X (formerly Twitter) account - [@Wakefield_scp](#) provides regular safeguarding children updates on local and national developments, resources, initiatives, policy, and guidance.

The account has over 600 followers (increase of 100 followers since last year) and is steadily growing. Followers predominately consist of practitioners and services who work and volunteer with children and families. WSCP's feed is used to provide important information such as updates to policies and procedures, promotion of learning events and links to new safeguarding information and resources.

WSCP's Instagram account - [@_keepyamatesafe_](#) has steadily continued to build a presence focusing on sharing awareness raising of safeguarding topics direct to children as part of the partnership's campaign. It currently has 79 followers, which has more than doubled since the account was launched last year.

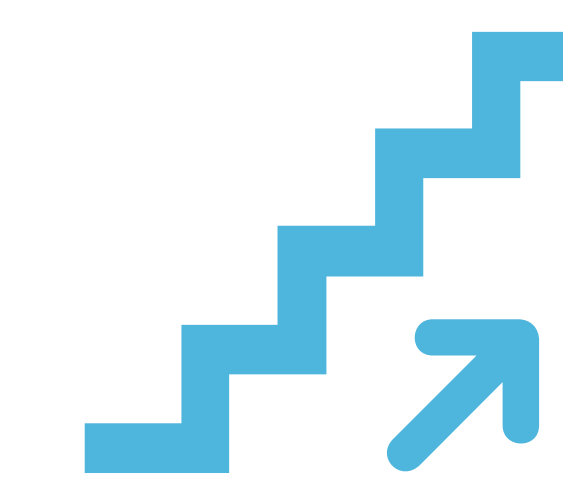


The impact of social media activity

On X, 306 posts were shared throughout the year, which generated 297 reposts, 423 likes and led to creating 85,912 impressions and 2,119 engagements. Highlights included:

- Water Safety: 56 engagements, 2,507 impressions, 12 reposts and 7 likes
- Drowning Prevention Week / launch of Be Water Wise campaign: 95 engagements, 2,294 impressions, 3 reposts, 14 likes, 1 reply
- Launch of Speak Up, Stand Up: 34 engagements, 354 impressions, 8 reposts, 8 likes

On Instagram, 24 posts were shared, reaching 502 accounts, which saw them interacted with 18 times and led to 30 profile visits. The highlight was a WSCP Business Unit led campaign supporting [PAPYRUS, a charity set up to prevent young suicide](#), Hope Walk raising awareness on the support they provide.



Key steps for 2024-25

- Further establish WSCP presence on Instagram
- Continue to consider establishing a presence on other social media platforms to extend reach to members of the public such as TikTok and LinkedIn
- Explore new approaches in creating online content which is interactive to highlight the work WSCP does and awareness on safeguarding topics

Introduction

Partnership Structure & Governance

Progress made since 2022-23

Independent Scrutineer Yearly Summary

Executive

Child Safeguarding Practice Review Group (CSPRG)

Child Death Overview Panel (CDOP)

Multi-Agency Child Exploitation (MACE) Group

Strategic and Delivery Learning & Development (L&D) Groups

Safeguarding Effectiveness Group (SEG)

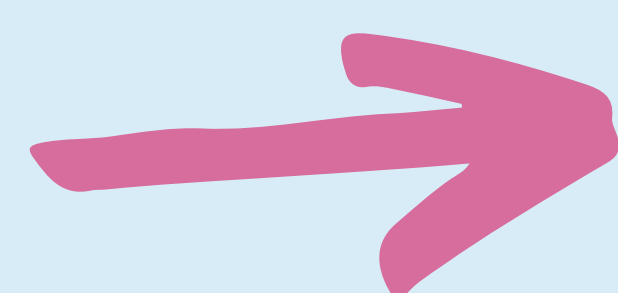
Safeguarding Advisor for Education

Communication and Engagement

Key Areas of Focus for 2024-25



WSCP e-bulletin



Overview of what has been achieved

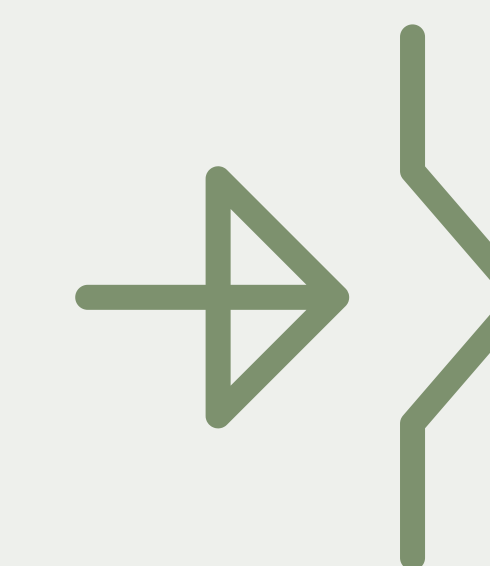
WSCP's [free monthly e-bulletin](#) continues to be a key approach in communicating all the latest local and national safeguarding resources, training, information and developments to provide anybody who subscribes (currently 1,291 subscribers which is an increase of 256 since last year).

In total 12 editions were produced and disseminated throughout the year monthly.

Since 22/23 there has been an increase in subscribers from Children and Young People Services, Early Years, Education, Health, VCS and what is classed as other (where the subscriber has not stated their service area on the sign up form). This increase is positive to see, as in 2023 the subscriber groups were analysed, and specific sectors were then targeted to inform them about the ebulletin and its purpose, and this exercise has resulted in a significant growth in numbers.

A breakdown on subscribers can be viewed below:

- Education (430 increase from 350 in 21/22)
- Children and Young People Services (352 increase from 320 in 22/23)
- Early Years (147 increase from 136 in 22/23)
- Health (104 increase from 55 in 22/23)
- Other (110 increase from 38 in 22/23)
- Public Health (17 no change from 22/23)
- Adult Services (13 no change from 22/23)
- Probation (12 no change from 22/23)
- Police (17 no change from 22/23)
- Voluntary and Community Sector (14 increase from 10 in 22/23)
- Youth Justice (5 no change from 22/23)
- Housing (5 no change from 22/23)
- Fire Service (1 no change from 22/23)



The impact of the e-Bulletin

The e-bulletin has become a key component in how WSCP directly communicates to a wide audience. The steady increase and retention of subscribers month-on-month highlights how valuable the content is that is produced.

In November 2023 the partnership circulated a survey, seeking feedback on the ebulletin. Overall feedback continued to be positive with over 80% of the respondents reporting they found the content of the e-bulletin either very useful or useful. This feedback is consistent with the findings from 22/23.

The e-bulletin consists of a range of information relevant to children's safeguarding, health, and wellbeing, this can include:

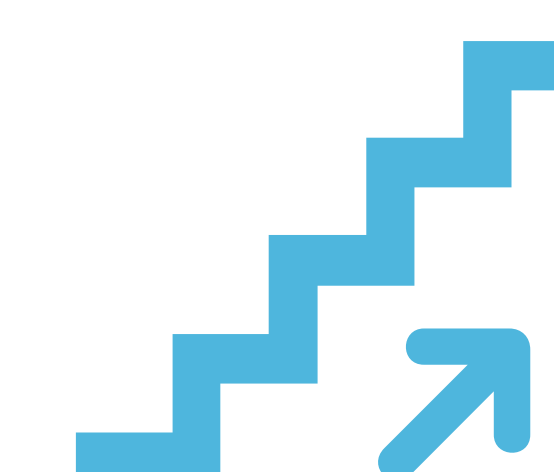
- WSCP training opportunities and that of partner agencies relating to a range of safeguarding areas
- Policy and procedure updates & developments, both locally and nationally
- Child Safeguarding Practice Reviews along with key recommendations identified
- Safety advice and safeguarding campaigns such as water safety advice, online safety, safer sleep advice, button battery dangers, child exploitation and neglect
- Activities for children and families taking place within the local district
- Mental Health support for children

In response to incidents of drowning of children in open water in the district in recent years, the ebulletin has committed to having a strong and consistent focus on water safety to constantly raise awareness. In 23/24 April 2023 – March 2024 articles have featured in 6 editions highlighting key water safety messages specific to winter, summer and the home environment, and detailing what resources are available to share with children.

A key feature of the e-bulletin is that as it is an online tool which enables the partnership to respond timely to any safeguarding developments and concerns in disseminating information promptly. An example of this included a safety alert of the dangers of self-feeding pillows which were deemed a significant risk to babies, was quickly shared with professionals via the ebulletin, who can then cascade the advice and information to families they work with.

The analytics for the e-bulletin averaged a reader rate of 28% for the year, which despite how low this may initially be viewed, is classed as a good rate based on the gradings of the council's corporate communication team.

To subscribe to the e-bulletin and view previous editions, visit the [WSCP e-bulletin page](#) on the WSCP website.



Key steps for 2024-25

- Undertake a follow up survey in 24/25 with subscribers to ensure they are receiving the e-bulletin when it is disseminated, and enquire if there are any suggestions, they can make for what they would to see included/ways to improve it
- Continue to target service areas who have a low subscription rate to increase numbers
- Enable a feature where subscribers can share ideas and request specific safeguarding content

Introduction

Partnership Structure &
Governance

Progress made since 2022-
23

Independent Scrutineer
Yearly Summary

Executive

Child Safeguarding Practice
Review Group (CSPRG)

Child Death Overview Panel
(CDOP)

Multi-Agency Child
Exploitation (MACE) Group

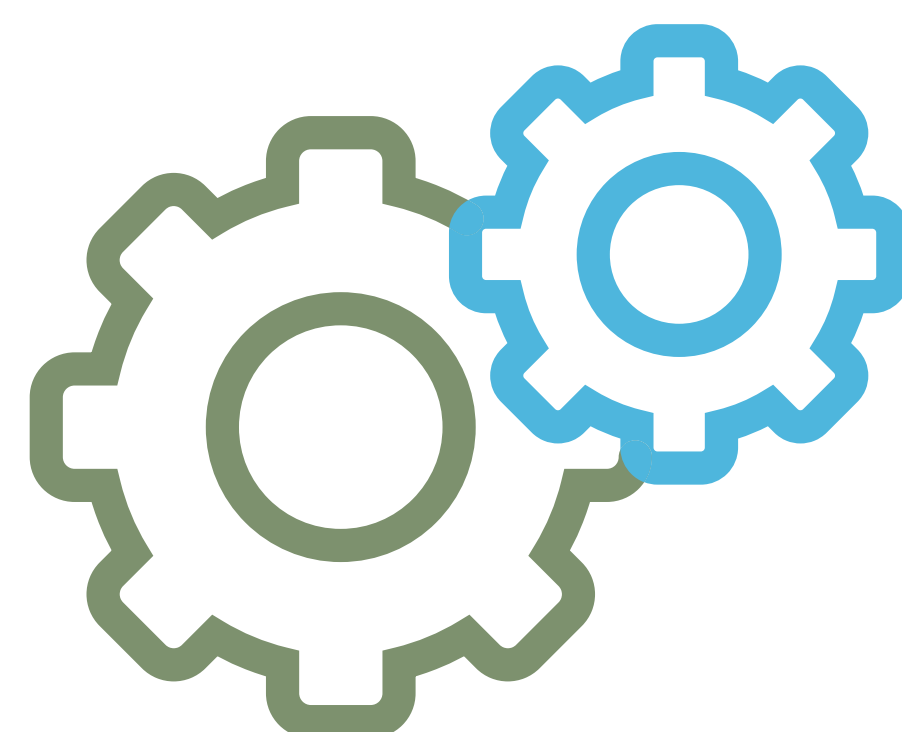
Strategic and Delivery
Learning & Development
(L&D) Groups

Safeguarding Effectiveness
Group (SEG)

Safeguarding Advisor for
Education

Communication and Engagement

Key Areas of Focus for
2024-25



Key Areas of Focus for 2024-25

The partnership has continued to make significant progress across a range of multi-agency safeguarding areas. Alongside the next steps already identified throughout this report under respective groups and areas, the partnership's delivery plan will continue to provide the basis for the 13 priority areas as referenced on page 3 to progress in 2024-25. These will include specific focuses on the below priorities as part of the delivery plan's deep dive report schedule:

- Ensure enhanced recognition and response to neglect across the partnership is in place
- Babies and infants are protected from sudden death due to unsafe sleep
- Children have a lead role in shaping and contributing to a safeguarding agenda
- Services who work with children have a proactive approach in identifying, preventing and disrupting child exploitation
- Safeguarding thresholds are well understood across the partnership workforce
- High quality safeguarding learning and development offer is in place for frontline workforce across the partnership

During 2024-25, planning for a new 2025-28 delivery will commence ahead of it being adopted from April 2025.



Introduction

Partnership Structure &
Governance

Progress made since 2022-
23

Independent Scrutineer
Yearly Summary

Executive

Child Safeguarding Practice
Review Group (CSPRG)

Child Death Overview Panel
(CDOP)

Multi-Agency Child
Exploitation (MACE) Group

Strategic and Delivery
Learning & Development
(L&D) Groups

Safeguarding Effectiveness
Group (SEG)

Safeguarding Advisor for
Education

Communication and
Engagement

**Key Areas of Focus
for 2024-25**